

Anfragen bitte an: info@meus.org

Produktübersicht

Gummierte Walzen und Vorschubrollen

Verzahnte Vorschubräder



gumirani in PU koluti
gummierte und PU rollen
rubber and PU rollers **A**

zobati koluti
verzahnte rollen
steel rollers

tehnični izdelki
iz gume
technische erzeugnisse
aus gummi
technical rubber
products

gumirani valji
gummierte walzen
rubber cylinders

storitve
dienstleistungen
service

Izdelujemo in obnavljamo gumirane, poliuretanske in zobate kolote za lesnoobdelovalne stroje

Nakup novih, standardnih kolotov

- za podajalnike (HolzHer, Elu, Haffner, Maggi, Festo, SCM, Roma, Frommia, Nastro-Zičnica, Wegoma, Univer ...)
- za štiristranske (Weinig, Wadkin, Gubisch, SCM, Harbs, Wegoma, Lestro-Ledinek, Guilliet, Roma, Festo-Goliath, Georg Fischer, Verboom ...)
- za skobeljne stroje (Martin, Panhans, SAC, Kölle, Hofmann ...)

Na zalogi imamo več kot 200 tipov standardnih kolotov; naročite, pošljemo takoj!

Izdelava kolotov po naročilu

Če v našem bogatem proizvodnem programu ni kolota, ki ga potrebujete, ga bomo radi izdelali po vašem načrtu ali vzorcu.

Obnova obrabljenih kolotov

Jedra starih kolotov očistimo in nanje vulkaniziramo novo gumijasto ali PU oblogo. Rok obnove: 5 delovnih dni ali po dogovoru.

Ob naročilu prosimo navedite znak stroja in dimenzije kolota (premer, širina, izvrtina, utor).

Trdote gume vam ni potrebno izbirati, saj vedno uporabimo oblogo, ki je najprimernejša za namen posameznega kolota. Na posebno željo in po predhodnem dogovoru lahko kolote obnovimo z gumo ali poliuretanom v trdoti po vaši izbiri.

Herstellung und Erneuerung von gummierten, polyurethan und verzahnten Rollen für Holzbearbeitungsmaschinen

Einkauf von neuen Standard-Rollen

- für Vorschubapparate (HolzHer, Elu, Maggi, Festo, SCM, Roma, Frommia, Univer, Wegoma, Haffner ...)
- für Vierseitenhobelmaschinen (Weinig, SCM, Wadkin, Gubisch, Verboom, Guilliet, Harbs, Lestro-Ledinek, Georg Fischer, Roma, Festo-Goliath ...)
- für Hobelmaschinen (Martin, Panhans, SAC, Kölle, Hofmann ...)

Wir haben über 200 Arten von Standard-Rollen auf Lager. Sie bestellen und wir liefern prompt!

Herstellung von Rollen nach der Bestellung

Falls Sie in unserem reichem Programm die Rolle, die Sie benötigen nicht finden, werden wir gerne diese Rolle, laut Ihrer Zeichnung oder Muster, herstellen.

Erneuerung von abgenutzten Rollen

Die Kerne von abgenutzten Rollen werden gereinigt und mit neuem Gummi- oder PU- Belag beschichtet. Erneuerungsfrist beträgt 5 Arbeitstage oder kürzer (nach Vereinbarung).

Bei der Bestellung bitten wir Sie den Maschinentyp und die Rollen-Dimensionen anzugeben (Durchmesser, Breite, Bohrung, Keilnut). Es ist nicht notwendig, die Härte der Gummimischung oder PU auszuwählen. Wir verwenden immer die Gummimischungen oder PU, die für den einzelnen Gebrauch der Rollen bestensprechend sind. Auf Wunsch und aufgrund der Vereinbarung können wir die Rollen auch nach Ihrer Wahl erneuern.

Production and renewal of rubber, polyurethan & steel rollers for woodworking machines

Purchase of new, standard rollers

- for power feeders (HolzHer, Haffner, Elu, Maggi, Festo, Frommia, Roma, SCM, Univer, Wegoma ...)
- for moulders (Weinig, SCM, Wadkin, Gubisch, Verboom, Guilliet, Harbs, Lestro-Ledinek, Georg Fischer, Roma, Festo-Goliath ...)
- for planers (Martin, Panhans, SAC, Kölle, Hofmann ...)

Over 200 standard roller types on stock; you order, we send immediately!

Special dimension rollers made to order

If you can not find a suitable roller in our wide standard program, we will be glad to manufacture rollers according to your design or sample.

Renewal of worn out rollers

We remove old rubber coat and vulcanize new rubber or PU layer on the cleaned roller core. Repair time: 5 working days (shorter term possible on request).

When ordering, please specify roller dimensions (diameter, width, bore, key-way) and the producer of the machine.

You do not have to choose hardness of rubber or PU, as we allways use rubber that suits best to the purpose of the specific roller. On special request, we can coat rollers with the rubber or PU of your choice.

Simboli uporabljeni v katalogu

Im diesem Katalog verwendete Symbole

In this catalogue used Symbols



Aluminijasto jedro

Aluminiumkern

Aluminium core



Jekleno jedro

Stahlkern

Steel core



Poliamidno jedro

Polyamidkern

Polyamid core



Trdota gume / v tem primeru 60 ShA

Härte der Gummi / in diesem Fall 60 ShA

Hardness of rubber / in this case 60 ShA



Bela guma

Weißes Gummi

White rubber



Rjava guma

Braunes Gummi

Brown rubber



Rdeč silikon

Rotes Silikon

Red silicone



Črna guma

Schwarzes Gummi

Black rubber



Siva guma

Graues Gummi

Grey rubber

Simboli pri vsakem izdelku, prikazujejo standardno uporabljene materiale.

Vse naše izdelke vam na željo izdelamo tudi po naročilu; z materiali, po vaši želji.

Symbole, die bei jedem Artikel sind, bezeichnen Standardmaterialien, die wir bei jedem Artikel verbrauchen.

Alle von unsere Produkte, können wir auch nach Ihren Wunsch machen; mit Kern- und Gummimaterial, den möchten.

Symbols that are written at each product present standard material that we use for each item as standard material.

All of our products can be produced after your wishes; with core and rubber material that you prefer.

4

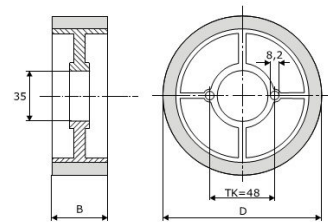
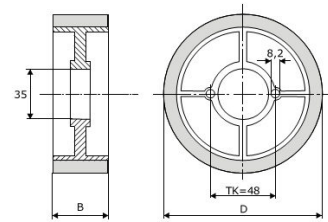


	50 ShA			
D (mm)	110	110	110	110
B (mm)	20	25	30	40
Kat. št.				
Bestell Nr.	110-20	110-25	110-30	110-40
Cat. No.				

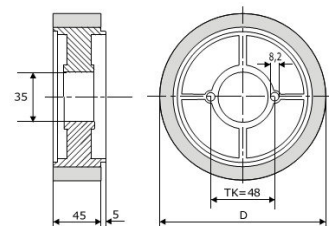
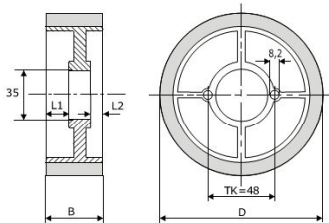
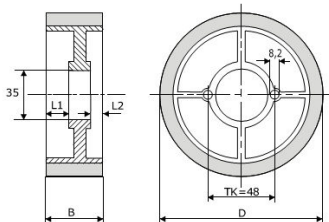
	50 ShA			
D (mm)	110	110	113	113
B (mm)	50	60	50	60
Kat. št.				
Bestell Nr.	110-50	110-60	113-50	113-60
Cat. No.				

	50 ShA				
D (mm)	120	120	120	120	120
B (mm)	20	30	40	50	60
Kat. št.					
Bestell Nr.	120-20	120-30	120-40	120-50	120-60S
Cat. No.					

	50 ShA		
D (mm)	128	128	135
B (mm)	50	60	50
Kat. št.			
Bestell Nr.	128-50	128-60 S	135-50
Cat. No.			



5



	50 ShA				
D (mm)	110	110	110	110	113
B (mm)	30	40	50	60	60
L1	16	19	29	29	29
L2	2	9	9	19	19
Kat. št.					
Bestell Nr.	110-30A	110-40A	110-50A	110-60A	113-60A
Cat. No.					

	50 ShA				
D (mm)	120	120	120	120	128
B (mm)	30	40	50	60	60
L1	16	19	29	29	29
L2	2	9	9	19	19
Kat. št.					
Bestell Nr.	120-30A	120-40A	120-50A	120-60A	128-60A
Cat. No.					

	50 ShA	
D (mm)	110	120
Kat. št.		
Bestell Nr.	110-45	120-45
Cat. No.		



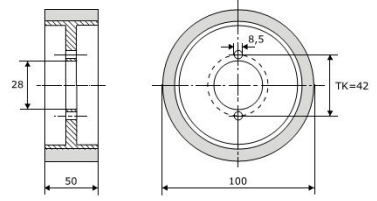
A

6



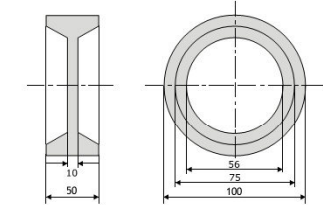
Ⓜ ⚠ 50 ShA

Kat. št. 100-50
Bestell Nr. 100-50
Cat. No. 100-50



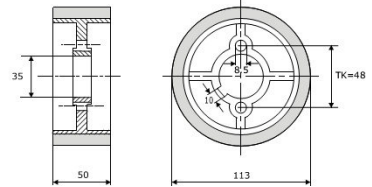
⚠ 50 ShA

Kat. št. gumijast obroč 100-50
Bestell Nr. gumijast obroč 100-50
Cat. No. gumijast obroč 100-50

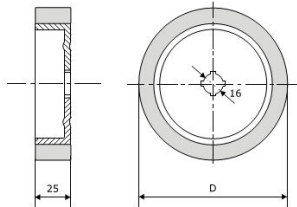


STÄHLE Ⓜ ⚠ 50 ShA

Kat. št. 113-50 Stähle
Bestell Nr. 113-50 Stähle
Cat. No. 113-50 Stähle



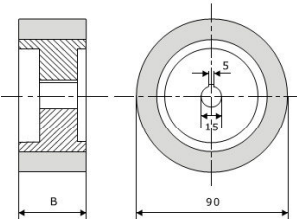
7



ELU Ⓜ ⚠ 50 ShA

D (mm) 110 120

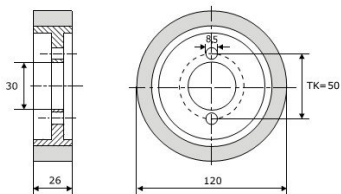
Kat. št. 110-25 Elu 120-25 Elu
Bestell Nr. 110-25 Elu 120-25 Elu
Cat. No. 110-25 Elu 120-25 Elu



FESTO Ⓜ ⚠ 50 ShA

B (mm) 50 40 33

Kat. št. 90-50 Festo 90-40 Festo 90-33 Festo
Bestell Nr. 90-50 Festo 90-40 Festo 90-33 Festo
Cat. No. 90-50 Festo 90-40 Festo 90-33 Festo



FESTO GOLIATH Ⓜ ⚠ 60 ShA

Kat. št. 120-26 Festo Goliath
Bestell Nr. 120-26 Festo Goliath
Cat. No. 120-26 Festo Goliath

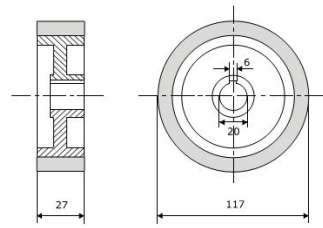


8



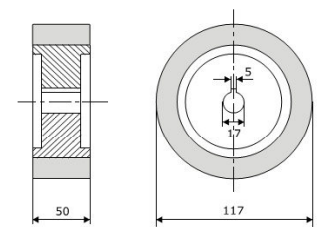
ROMA **60 ShA**

Kat. št. _____
Bestell Nr. 117-27 Roma
Cat. No. _____



ROMA **60 ShA**

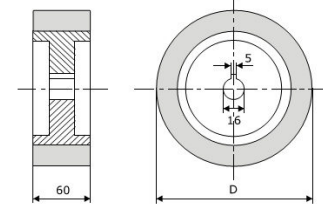
Kat. št. _____
Bestell Nr. 117-50 Roma
Cat. No. _____



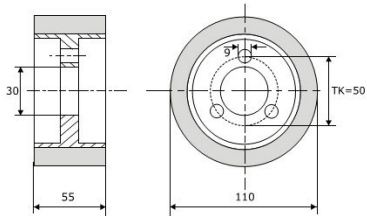
FROMMIA **60 ShA**

D (mm) 80 70

Kat. št. _____
Bestell Nr. 80-60 Frommia 70-60 Frommia
Cat. No. _____

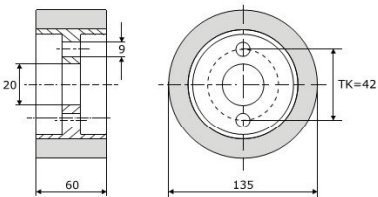


9



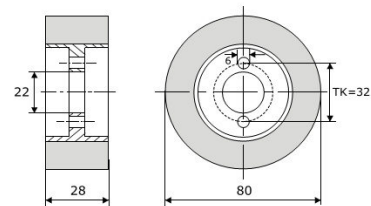
FROMMIA **60 ShA**

Kat. št. _____
Bestell Nr. 110-55 Frommia
Cat. No. _____



FROMMIA **60 ShA**

Kat. št. _____
Bestell Nr. 135-60 Frommia
Cat. No. _____



MAGGI **60 ShA**

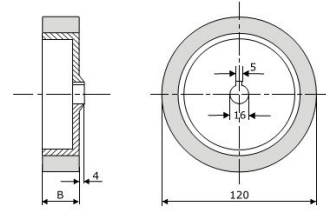
Kat. št. _____
Bestell Nr. 80-28 Maggi
Cat. No. _____



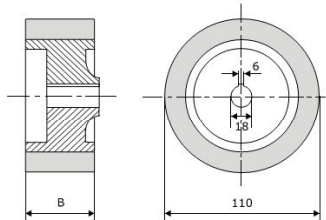
10



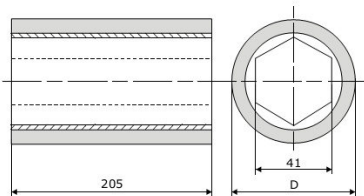
MAGGI VARIOMATIC			Ⓜ	⚠	60 ShA
B (mm)	20	25			
Kat. št.	120-20	120-25			
Bestell Nr.	Maggi Variomatic	Maggi Variomatic			
Cat. No.					



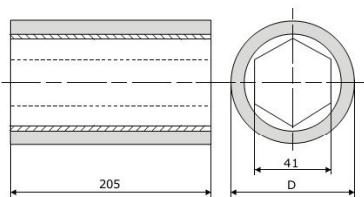
DDR				Ⓜ	⚠	60 ShA
B (mm)	25	50	60			
Kat. št.	110-25 DDR	110-50 DDR	110-60 DDR			
Bestell Nr.						
Cat. No.						



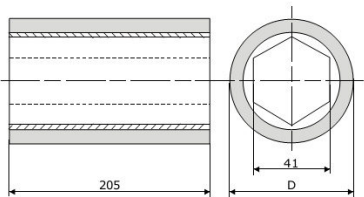
11



MARTIN			Ⓜ	⚠	60 ShA
D (mm)	74	85			
Kat. št.	74-205 Martin	85-205 Martin			
Bestell Nr.					
Cat. No.					



MARTIN			Ⓜ	⚠	65 ShA
D (mm)	74	85			
Kat. št.	74-205 Martin	85-205 Martin			
Bestell Nr.					
Cat. No.					



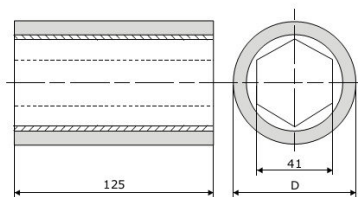
MARTIN			Ⓜ	⚠	70 ShA
D (mm)	74	85			
Kat. št.	74-205 Martin	85-205 Martin			
Bestell Nr.					
Cat. No.					



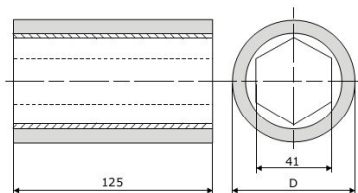
12



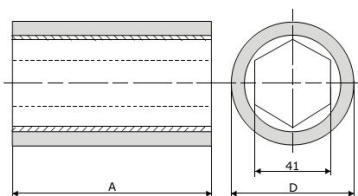
PANHANS			Ⓜ	⚠	60 ShA
D (mm)	75	90			
Kat. št. Bestell Nr. Cat. No.	75-125 Panhans	90-125 Panhans			



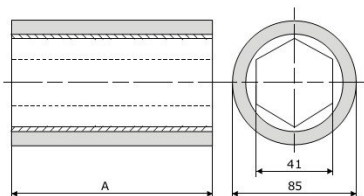
PANHANS			Ⓜ	⚠	70 ShA
D (mm)		90			
Kat. št. Bestell Nr. Cat. No.		90-125 Panhans			



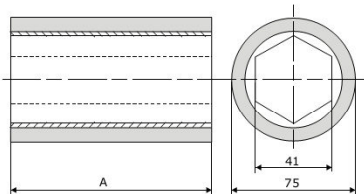
SAC				Ⓜ	⚠	60 ShA
A (mm)	210	175	120			
D (mm)	85	85	74			
Kat. št. Bestell Nr. Cat. No.	85-210 SAC	85-175 SAC	74-120 SAC			



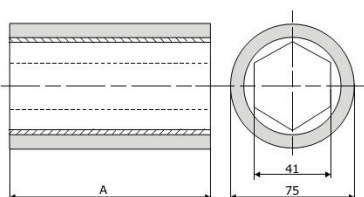
13



SAC			Ⓜ	⚠	70 ShA
A (mm)	210	175			
Kat. št. Bestell Nr. Cat. No.	85-210 SAC	85-175 SAC			



HOFMANN				Ⓜ	⚠	60 ShA
A (mm)	210	170	90			
Kat. št. Bestell Nr. Cat. No.	75-210 Hofmann	75-170 Hofmann	75-90 Hofmann			



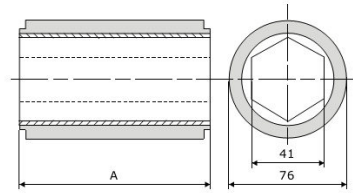
HOFMANN			Ⓜ	⚠	70 ShA
A (mm)	210	90			
Kat. št. Bestell Nr. Cat. No.	75-210 Hofmann	75-90 Hofmann			



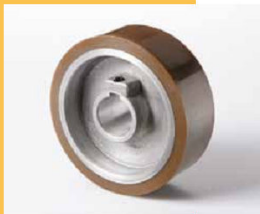
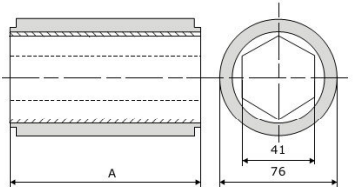
14



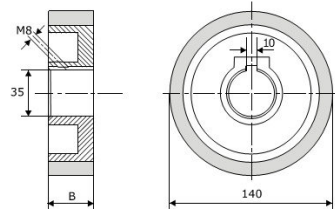
KÖLLE	(Al) (W) 60 ShA	
A (mm)	644	514
Kat. št. Bestell Nr. Cat. No.	76-644 Kölle	76-514 Kölle



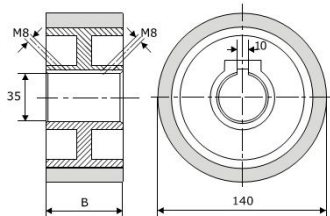
KÖLLE	(Al) (B) 70 ShA	
A (mm)	644	514
Kat. št. Bestell Nr. Cat. No.	76-644 Kölle	76-514 Kölle



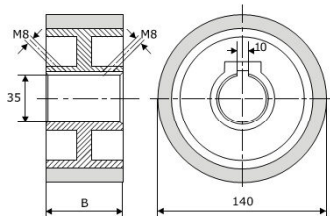
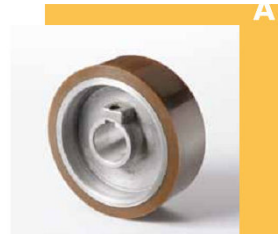
WEINIG	(Al) (A) 70 ShA	
B (mm)	30	
Kat. št. Bestell Nr. Cat. No.	140-30-35V	



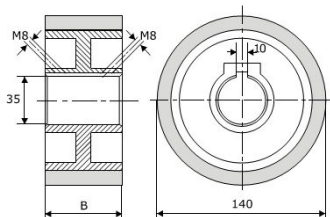
15



WEINIG	(Al) (A) 70 ShA	
B (mm)	50	
Kat. št. Bestell Nr. Cat. No.	140-50-35V	



WEINIG	(Al) (A) 65 ShA	
B (mm)	50	
Kat. št. Bestell Nr. Cat. No.	140-50-35V	



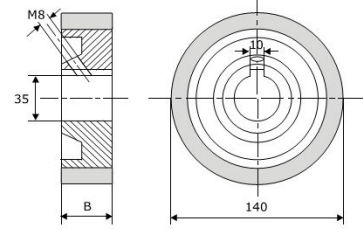
WEINIG	(Al) (W) 60 ShA	
B (mm)	50	
Kat. št. Bestell Nr. Cat. No.	140-50-35V	



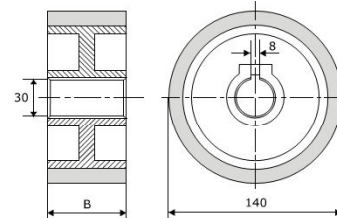
16



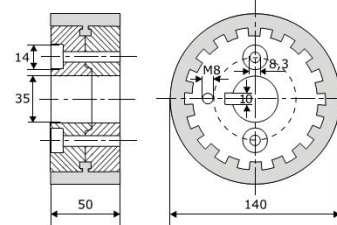
WEINIG				
B (mm)	25	20	15	10
Kat. št.				
Bestell Nr.	140-25-35V	140-20-35V	140-15-35V	140-10-35V
Cat. No.				



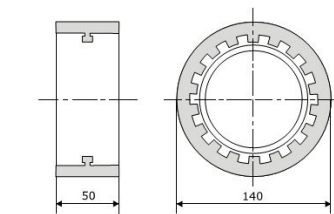
WEINIG		
B (mm)	50	25
Kat. št.		
Bestell Nr.	140-50-30	140-25-30
Cat. No.		



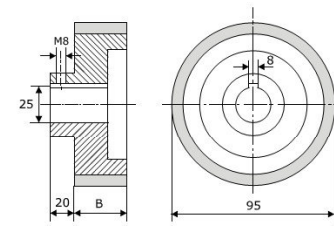
WEINIG	
Kat. št.	
Bestell Nr.	140-50-MT
Cat. No.	



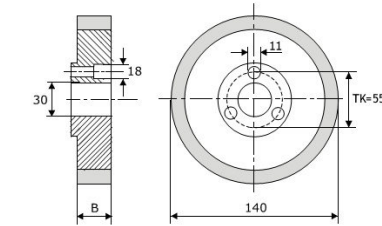
17



WEINIG RING	
Kat. št.	
Bestell Nr.	140-50-RT
Cat. No.	



WEINIG		
B (mm)	50	30
Kat. št.		
Bestell Nr.	95-50-25	95-30-25
Cat. No.		



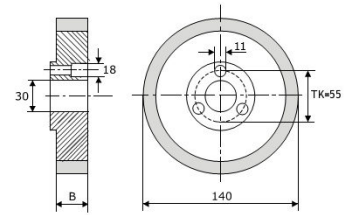
WEINIG			
B (mm)	50	30	25
Kat. št.			
Bestell Nr.	140-50-3V	140-30-3V	140-25-3V
Cat. No.			



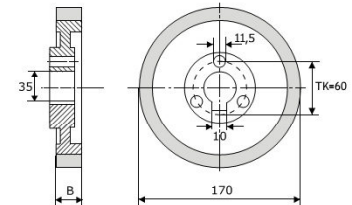
18



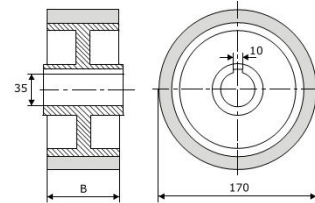
WEINIG			
Al 70 ShA			
B (mm)	22	19	15
Kat. št.			
Bestell Nr.	140-22-3V	140-19-3V	140-15-3V
Cat. No.			



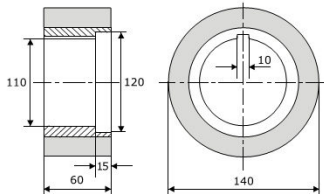
WEINIG		
Al 70 ShA		
B (mm)	50	15
Kat. št.		
Bestell Nr.	170-50-3V	170-15-3V
Cat. No.		



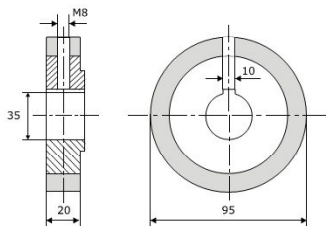
WEINIG				
Al 70 ShA				
B (mm)	50	35	25	20
Kat. št.				
Bestell Nr.	170-50-35	170-35-35	170-25-35	170-20-35
Cat. No.				



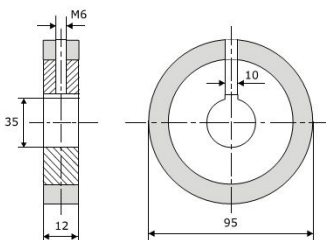
19



WEINIG	
Fe 70 ShA	
Kat. št.	
Bestell Nr.	140-60-110 Weinig
Cat. No.	



WEINIG	
Al 70 ShA	
Kat. št.	
Bestell Nr.	95-20-35 Weinig
Cat. No.	



WEINIG	
Al 70 ShA	
Kat. št.	
Bestell Nr.	95-12-35 Weinig
Cat. No.	



20



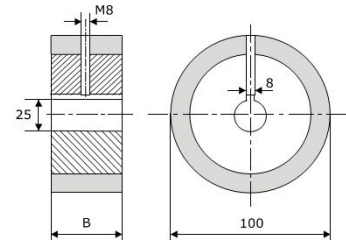
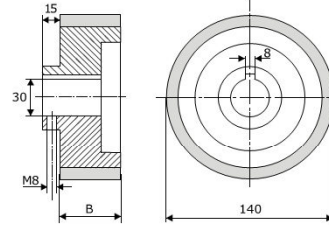
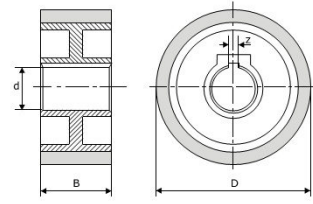
LESTRO			
D (mm)	140	140	240
B (mm)	50	25	48
d (mm)	30	30	50
z (mm)	6	6	10
Kat. št.			
Bestell Nr.	140-50 Lestro	140-25 Lestro	240-48 Lestro
Cat. No.			



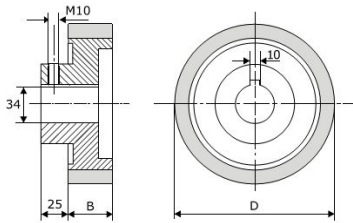
GUBISCH			
B (mm)	50	30	25
Kat. št.			
Bestell Nr.	140-50 Gubisch	140-30 Gubisch	140-25 Gubisch
Cat. No.			



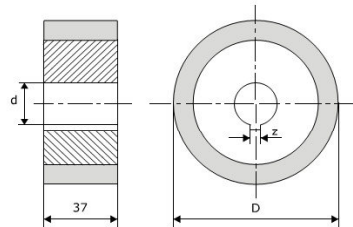
GUBISCH			
B (mm)	50	35	25
Kat. št.			
Bestell Nr.	100-50-25 Gubisch	100-35-25 Gubisch	100-25-25 Gubisch
Cat. No.			



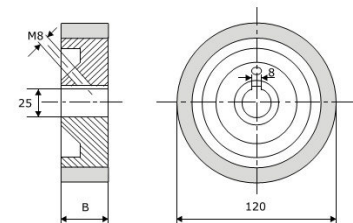
21



HARBS					
D (mm)	165	165	180	180	180
B (mm)	50	35	80	50	35
Kat. št.					
Bestell Nr.	165-50 Harbs	165-35 Harbs	180-80 Harbs	180-50 Harbs	180-35 Harbs
Cat. No.					



GEORG FISCHER			
D (mm)	183	143	123
d (mm)	50	35	35
z (mm)	14	10	10
Kat. št.			
Bestell Nr.	183-37 GF	143-37 GF	123-37 GF
Cat. No.			



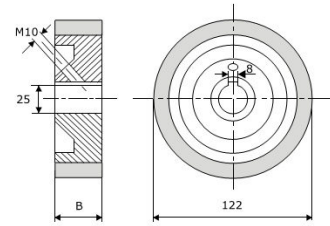
GUILLIET		
B (mm)	50	20
Kat. št.		
Bestell Nr.	120-50-25 Guilliet	120-20-25 Guilliet
Cat. No.		



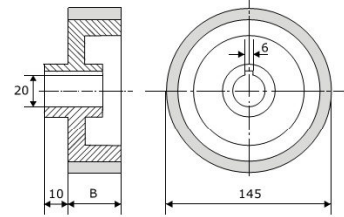
22



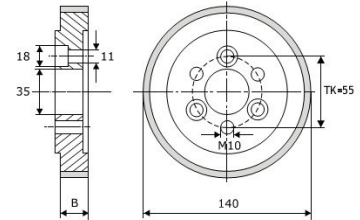
Vierseiter, H+K			Fe	70 ShA
B (mm)	50	20		
Kat. št.				
Bestell Nr.	122-50-25 Vierseiter	122-20-25 Vierseiter		
Cat. No.				



SAC						Al	60 ShA
B (mm)	60	50	40	35	30		
Kat. št.							
Bestell Nr.	145-60 SAC	145-50 SAC	145-40 SAC	145-35 SAC	145-30 SAC		
Cat. No.							

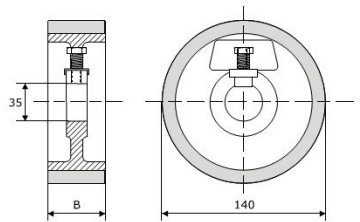


SCM					Al	70 ShA
B (mm)	20*	25*	40	50		
Kat. št.						
Bestell Nr.	140-20-3V SCM	140-25-3V SCM	140-40-3V SCM	140-50-3V SCM		
Cat. No.						

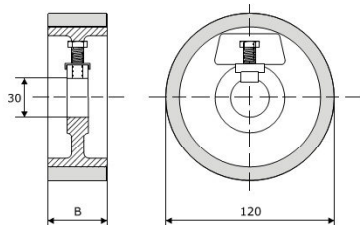


* jekleno jedro / steel core / Stahlkern

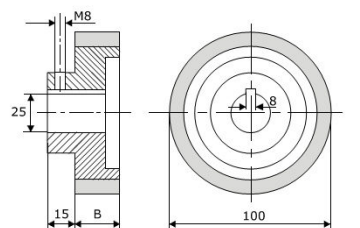
23



SCM				Fe	70 ShA
B (mm)	50	30	20		
Kat. št.					
Bestell Nr.	140-50-35V SCM	140-30-35V SCM	140-20-35V SCM		
Cat. No.					



SCM			Fe	60 ShA
B (mm)	50	20		
Kat. št.				
Bestell Nr.	120-50-30V SCM	120-20-30V SCM		
Cat. No.				



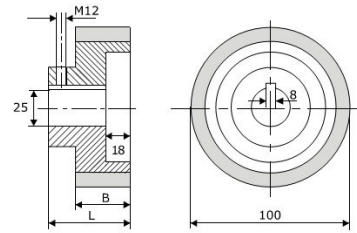
SCM			Al	60 ShA
B (mm)	60	30		
Kat. št.				
Bestell Nr.	100-60-25V SCM	100-30-25V SCM		
Cat. No.				



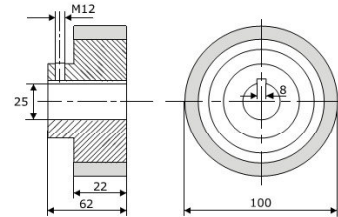
24



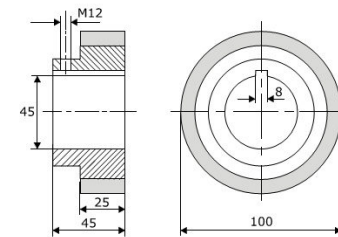
SCM (Al) Δ 60 ShA				
B (mm)	40	40	40	30
L (mm)	65	80	170	55
Kat. št.				
Bestell Nr.	100-40/65	100-40/80	100-40/170	100-30/55
Cat. No.	SCM	SCM	SCM	SCM



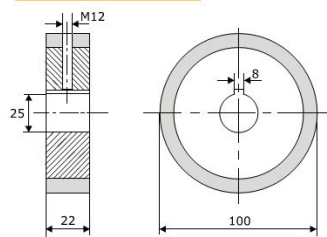
SCM WINDOR (Al) Δ 60 ShA	
Kat. št.	
Bestell Nr.	100-22-25 L=62 SCM
Cat. No.	



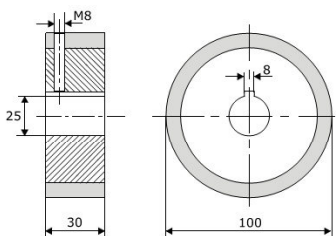
SCM (Al) Δ 60 ShA	
Kat. št.	
Bestell Nr.	100-25-45 SCM
Cat. No.	



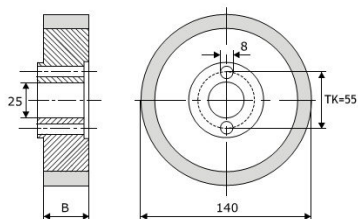
25



SCM (Al) Δ 60 ShA	
Kat. št.	
Bestell Nr.	100-22-25 SCM
Cat. No.	



SCM (Al) Δ 60 ShA	
Kat. št.	
Bestell Nr.	100-30-25 SCM
Cat. No.	



WADKIN (Fe) Δ 70 ShA			
B (mm)	50	20	10
Kat. št.			
Bestell Nr.	140-50-25	140-20-25	140-10-25
Cat. No.	Wadkin	Wadkin	Wadkin

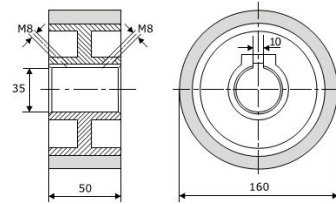


26



VERBOOM Al Δ 70 ShA

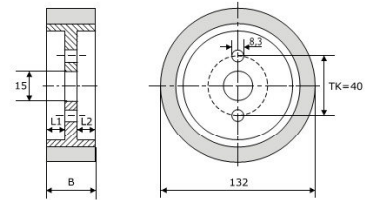
Kat. št. 160-50-35 Verboom
 Bestell Nr.
 Cat. No.



STETON Al Δ 60 ShA

B (mm)	50	35
L1 (mm)	13	13
L2 (mm)	25	10

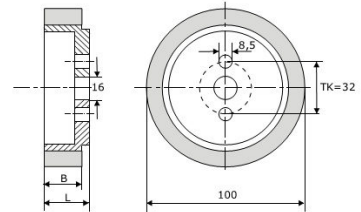
Kat. št. 132-50 STETON 132-35 STETON
 Bestell Nr.
 Cat. No.



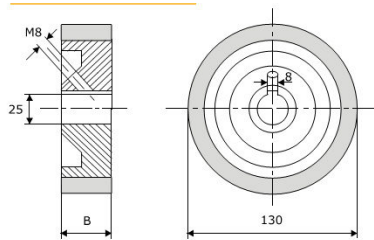
TPC Al Δ 60 ShA

B (mm)	40	30
L (mm)	45	35

Kat. št. 100-40 TPC 100-30 TPC
 Bestell Nr.
 Cat. No.



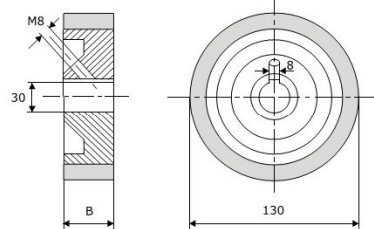
27



TSN Fe Δ 70 ShA

B (mm)	50	30	25	20
--------	----	----	----	----

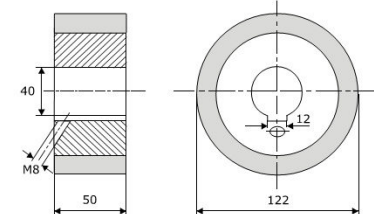
Kat. št. 130-50-25 TSN 130-30-25 TSN 130-25-25 TSN 130-20-25 TSN
 Bestell Nr.
 Cat. No.



TSN Fe Δ 70 ShA

B (mm)	50	25	20
--------	----	----	----

Kat. št. 130-50-30 TSN 130-25-30 TSN 130-20-30 TSN
 Bestell Nr.
 Cat. No.



MARTIN Al Δ 60 ShA

Kat. št. 122-50-40 Martin
 Bestell Nr.
 Cat. No.

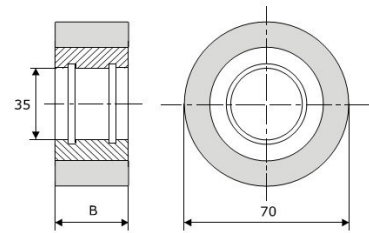


28



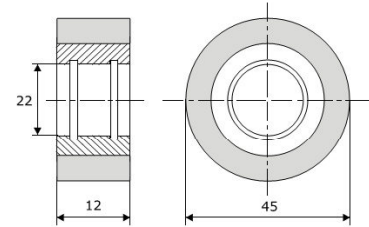
UMMANTELUNGSMASCHINEN (Silikon) 50 ShA

B (mm)	50	25	15
Kat. št.			
Bestell Nr.	70-50-35	70-25-35	70-15-35
Cat. No.			



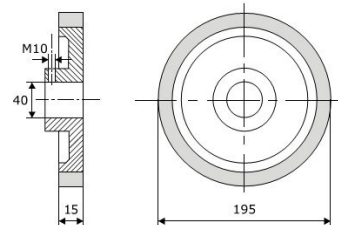
UMMANTELUNGSMASCHINEN 70 ShA

Kat. št.	
Bestell Nr.	45-12-22
Cat. No.	

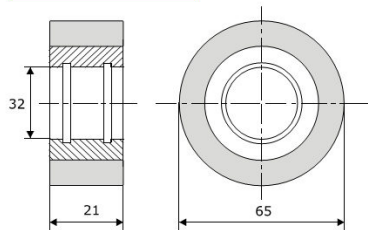


DÜSPOHL 70 ShA

Kat. št.	
Bestell Nr.	195-15-40
Cat. No.	



29



BIMATIC 60 ShA

Kat. št.	
Bestell Nr.	65-21-32
Cat. No.	



A

Oblika zob Das Zahnprofil Teeth shape

Profil A - Weinig standardni profil
Profil A - Weinig Standardprofil
Profile A - Weinig standard profile

Profil B - za moker les
Profil B - Nassholzprofil
Profile B - wet wood profile

Profil C - standardni Elastomeri
Profil C - Elastomeri Standardprofil
Profile C - standard Elastomeri profile

Profil D - stari Weinig
Profil D - Altes Weinigprofil
Profile D - old Weinig profile

Profil E
Profil E
Profil E

Profil F
Profil F
Profil F

Profil G
Profil G
Profil G

Smer zob
Richtung der Verzahnung
Teeth direction

ravno zobljenje -
oznaka R
Geradeverzahn -
Bezeichnung R
straight-toothed -
order number R

poševno zobljenje -
brez oznake
Schrägverzahn -
ohne Bezeichnung
helix-toothed -
no order number

zobati koluti verzahnte rollen steel rollers

Nakup novih, standardnih kolutov
Na zalogi imamo različne tipe standardnih kolutov; naročite, pošljemo takoj!

Ob naročilu prosimo navedite znamko stroja, dimenzije koluta (premer, širina, izvrtina, utor) in opis zobljenja (oblika zob, smer zob, material). Skupna oznaka vseh zobatih kolutov je **Z**.

Primer naročila:
kolut 140-50-35 ZB chr Weinig pomeni zobat kolut za stroj Weinig, premera 140 mm in širine 50 mm, za obdelavo mokrega lesa, poševno zobljen, kroman

Obnova obrabljenih kolutov
Ponovno nabrusimo obrabljene zobe kolutov.

Izdelava kolutov po naročilu
Če v našem bogatem proizvodnem programu ni koluta, ki ga potrebujete, ga bomo radi izdelali po vašem načrtu ali vzorcu.

Material
Vsi koluti so izdelani iz kaljenega jekla, ki ga dodatno kromamo, s čimer dosežemo izjemno odpornost in dolgotrajno delovanje izdelka.

Po želji lahko izdelamo tudi nekromane kolute.

Einkauf von neuen Standard-Rollen
Wir haben auf Lager verschiedene Arten von Standard-Rollen. Sie bestellen und wir liefern prompt!

Bei der Bestellung bitten wir Sie den Maschinentyp und die Rollen-Dimensionen anzugeben (Durchmesser, Breite, Bohrung, Keilnut) und die Beschreibung der Zähne (Zahnprofil, Richtung und Material). Die gemeinsame Bezeichnung für alle verzahnte Rollen ist **Z**.

Beispiel:
Rolle 140-50-35 ZB chr Weinig bedeutet: Verzahnte Weinig Rolle, Durchmesser 140 mm, Breite 50 mm, für Nassholz, schrägverzahn und verchromt

Erneuerung von gebrauchten Rollen
Wir schleifen die abgenutzten Zähne der Stahlrollen.

Herstellung von Verzahnten Rollen nach der Bestellung
Falls Sie in unserem reichen Programm die Rolle, die Sie benötigen nicht finden, werden wir gerne diese Rolle, laut Ihrer Zeichnung oder Muster, herstellen.

Das Material
Alle Rollen sind aus qualitativem gehärtetem Stahl, das noch verchromt ist, hergestellt. Damit erreichen wir ausnahmsreiche Verschleißfestigkeit und langfristige Funktion des Artikels.

Nach Wunsch können die Rollen auch unverchromt hergestellt werden.

Purchase of new, standard rollers
Many standard roller types on stock; you order, we send immediately!

When ordering, please specify roller dimensions (diameter, width, bore, key-way), description of teeth (shape, direction), roller material and the producer of the machine. Order number **Z** is a general mark depicting all steel rollers.

Example:
Roller 140-50-35 ZB chr Weinig means a steel roller for Weinig machine, 140 mm in diameter and 50 mm wide, for wet wood processing, helix-toothed, chromium plated.

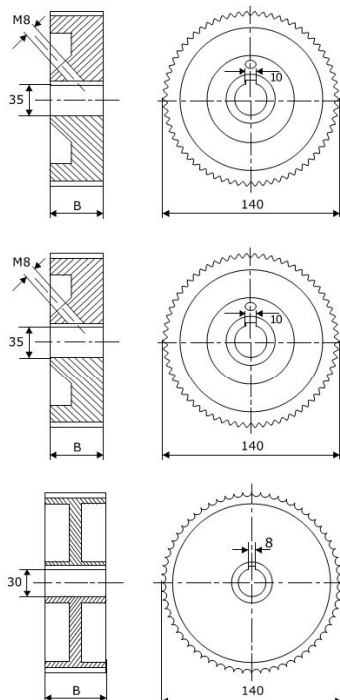
Renewal of worn out rollers
We sharpen blunt teeth of used steel rollers.

Special dimension rollers made to order
If you can not find a suitable roller in our wide standard program, we will be glad to manufacture rollers according to your design or sample.

Roller material
All rollers are made of high quality hardened steel with additional chromium surface layer, which ensures an extra durability and considerably prolonged life time of the product.

Non chromium plated rollers available on special request.

31



WEINIG

B (mm)	50	30	25
--------	----	----	----

Kat. št.	140-50-35 Z	140-30-35 Z	140-25-35 Z
Bestell Nr.			
Cat. No.			

WEINIG

B (mm)	20	15	10
--------	----	----	----

Kat. št.	140-20-35 Z	140-15-35 Z	140-10-35 Z
Bestell Nr.			
Cat. No.			

WEINIG

B (mm)	50	30	20	15
--------	----	----	----	----

Kat. št.	140-50-30 Z	140-30-30 Z	140-20-30 Z	140-15-30 Z
Bestell Nr.				
Cat. No.				



B



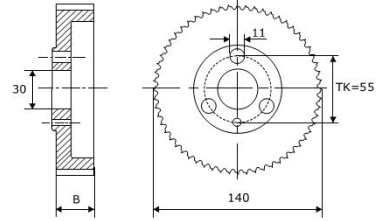
32



WEINIG

B (mm)	50	30
--------	----	----

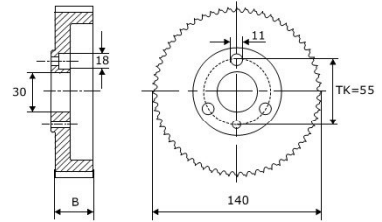
Kat. št.		
Bestell Nr.	140-50-30-3V Z	140-30-30-3V Z
Cat. No.		



WEINIG

B (mm)	25	20	15
--------	----	----	----

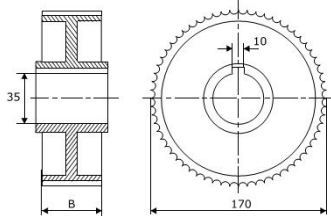
Kat. št.			
Bestell Nr.	140-25-30-3V Z	140-20-30-3V Z	140-15-30-3V Z
Cat. No.			



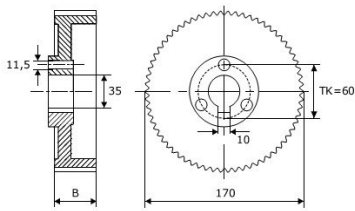
WEINIG

B (mm)	50	30	25	20	15
--------	----	----	----	----	----

Kat. št.					
Bestell Nr.	170-50-35Z	170-30-35Z	170-25-35Z	170-20-35Z	170-15-35Z
Cat. No.					



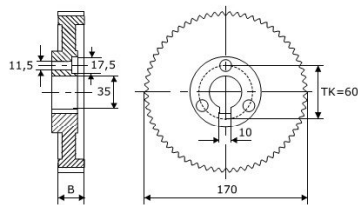
33



WEINIG

B (mm)	50	30
--------	----	----

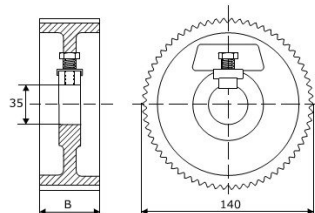
Kat. št.		
Bestell Nr.	170-50-35-3V Z	170-30-35-3V Z
Cat. No.		



WEINIG

B (mm)	25	20	15
--------	----	----	----

Kat. št.			
Bestell Nr.	170-25-35-3V Z	170-20-35-3V Z	170-15-35-3V Z
Cat. No.			



SCM

B (mm)	50	30	25	20
--------	----	----	----	----

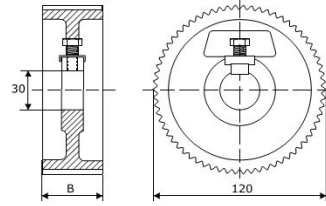
Kat. št.				
Bestell Nr.	140-50-35 Z	140-30-35 Z	140-25-35 Z	140-20-35 Z
Cat. No.	SCM	SCM	SCM	SCM



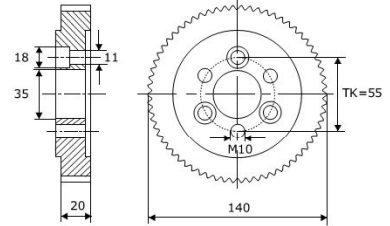
34



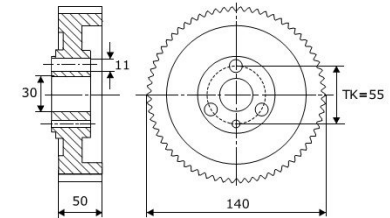
SCM		
B (mm)	50	20
Kat. št.		
Bestell Nr.	120-50-30 Z SCM	120-20-30 Z SCM
Cat. No.		



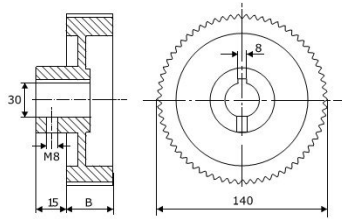
SCM	
Kat. št.	
Bestell Nr.	140-20-35-3V Z SCM
Cat. No.	



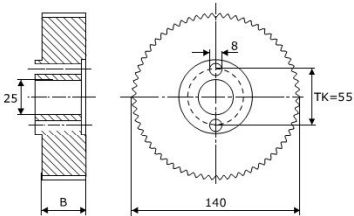
SCM	
Kat. št.	
Bestell Nr.	140-50-30-4V Z SCM
Cat. No.	



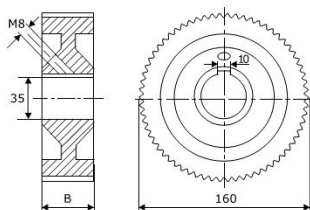
35



GUBISCH			
B (mm)	50	30	25
Kat. št.			
Bestell Nr.	140-50 Z Gubisch	140-30 Z Gubisch	140-25 Z Gubisch
Cat. No.			



WADKIN			
B (mm)	50	20	10
Kat. št.			
Bestell Nr.	140-50-25 Z Wadkin	140-20-25 Z Wadkin	140-10-25 Z Wadkin
Cat. No.			



VERBOOM		
B (mm)	50	25
Kat. št.		
Bestell Nr.	160-50-35 Z Verboom	160-25-35 Z Verboom
Cat. No.		



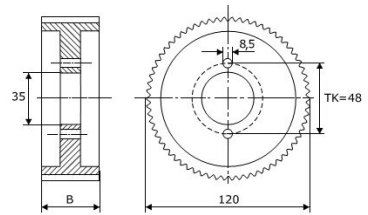
36



120-50, 120-60

B (mm) 50 60

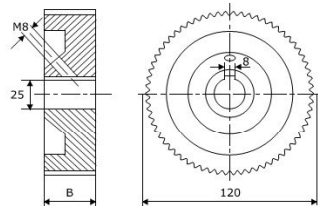
Kat. št.
 Bestell Nr. 120-50 Z 120-60 Z
 Cat. No.



GUILLET

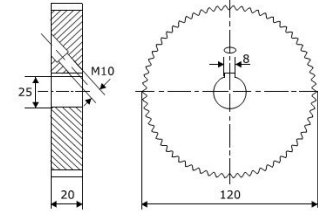
B (mm) 50 20

Kat. št.
 Bestell Nr. 120-50-25 Z 120-20-25 Z
 Cat. No. Guilliet Guilliet

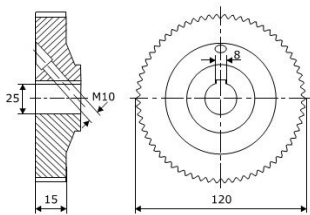


VIERSEITER, H+K

Kat. št.
 Bestell Nr. 120-20-25 Z Vierseiter, H+K
 Cat. No.

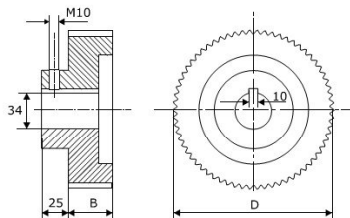


37



VIERSEITER, H+K

Kat. št.
 Bestell Nr. 120-15-25 Z Vierseiter, H+K
 Cat. No.

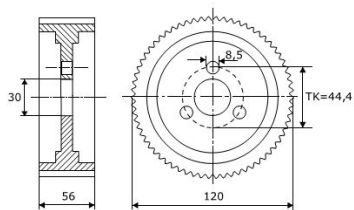


HARBS

D (mm) 165 165 180 180 180

B (mm) 50 35 80 50 35

Kat. št.
 Bestell Nr. 165-50Z 165-35Z 180-80Z 180-50Z 180-35Z
 Cat. No. Harbs Harbs Harbs Harbs Harbs



CHUET

Kat. št.
 Bestell Nr. 120-56-30-3V Z Chuet
 Cat. No.

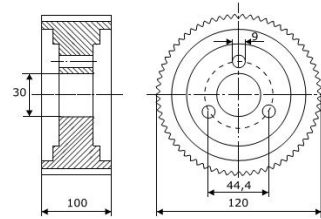


B



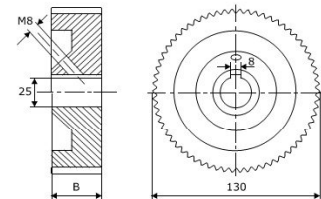
**CHUET**

Kat. št. _____
 Bestell Nr. 120-100-30-3V Z Chuet
 Cat. No. _____

**TSN**

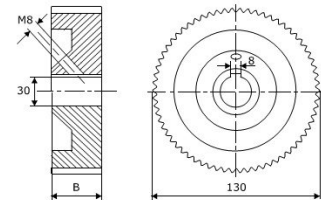
B (mm) 50 30 25 20

Kat. št. _____
 Bestell Nr. 130-50-25 Z 130-30-25 Z 130-25-25 Z 130-20-25 Z
 Cat. No. TSN TSN TSN TSN

**TSN**

B (mm) 50 25 20

Kat. št. _____
 Bestell Nr. 130-50-30 Z 130-25-30 Z 130-20-30 Z
 Cat. No. TSN TSN TSN



tehnični izdelki iz gume
technische erzeugnisse aus gummi
technical rubber products

TEHNIČNI IZDELKI IZ GUME
produzvodnja in obnova

- ploščice, čepki in obročki za robne furnirje (Brandt, Homag, HolzHer, Ott ...)
- valjčki za nanos lepila
- raznovrstni tehnični izdelki po vaših zahtevah

TECHNISCHE ERZEUGNISSE AUS GUMMI
Herstellung und Erneuerung

- gummierte Kettenscheiben, Zapfen und Ringe für Kantenanleimmaschinen (Brandt, Homag, HolzHer, Ott...)
- kleinere Walzen zum Auftragen von Leim
- technische Erzeugnisse nach Ihren Anforderungen

TECHNICAL RUBBER PRODUCTS
production and renewal

- rubber coated chain plates, plugs and rings for edgeling and bonding machines (Brandt, Homag, HolzHer, Ott ...)
- rollers for glue application
- various technical custom made products

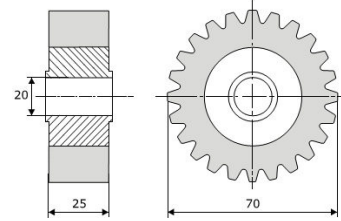


40



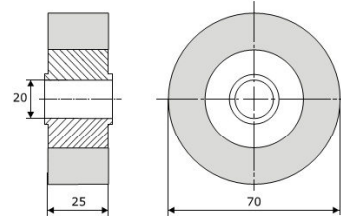
HOMAG BRANDT 

Kat. št. 70-25-20-U Homag
Bestell Nr.
Cat. No.



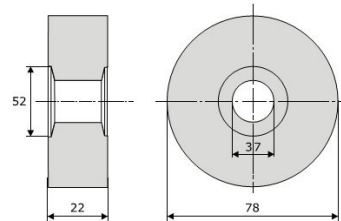
HOMAG BRANDT 

Kat. št. 70-25-20 Homag
Bestell Nr.
Cat. No.

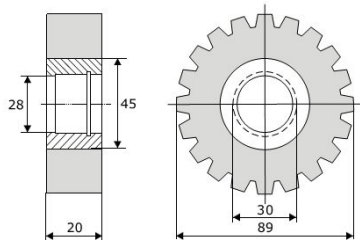


OLIMPIC RING 

Kat. št. 78-22-37 Olympic Ring
Bestell Nr.
Cat. No.

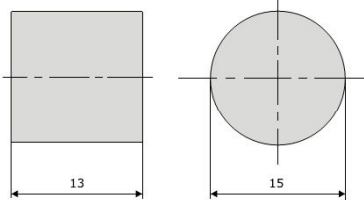


41



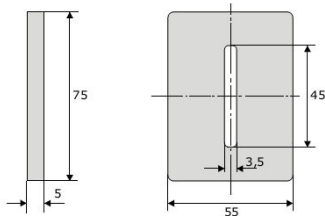
TAGLIABUE 

Kat. št. 89-20-28 Tagliabue
Bestell Nr.
Cat. No.



HOLZHER 

Kat. št. 15-13 Holzher
Bestell Nr.
Cat. No.



**GUMIJASTA PLOŠČICA
GUMMIPLATTE
RUBBER PAD** 

Kat. št. 75-55-5
Bestell Nr.
Cat. No.



C

GUMIRANI VALJI
obnova in proizvodnja

- za kontaktne brusilke
 - za nanos lepil
 - za nanos lužil (penasta guma)
 - za nanos barv in lakov
 - transportni valji
 - raznovrstni gumirani valji po vaših zahtevah
- Rok obnove: 5 - 7 delovnih dni ali po dogovoru

Maksimalne dimenzije valjev:

- maksimalna dolžina 3200 mm
- maksimalni premer 380 mm
- maksimalna teža 500 kg

GUMMIERTE WALZEN
Erneuerung und Herstellung

- für Breitbandschleifmaschinen
 - zum Auftragen von Leim
 - zum Auftragen von Beizen (Moosgummi)
 - zum Auftragen von Farben und Lacken
 - für Transportzwecke
 - verschiedene gummierte Walzen nach Ihren Anforderungen
- Lieferfrist bei der Erneuerung beträgt 5 - 7 Arbeitstage oder nach Vereinbarung

Max. Dimensionen der Walzen:

- max. Länge 3200 mm
- max. Durchmesser 380 mm
- max. Gewicht 500 kg

RUBBER CYLINDERS
production and renewal

- for sanders
 - for gluing machines
 - for staining machines (foam rubber)
 - for paint and varnish machines
 - for conveyors
 - various custom made rubber cylinders
- Repair time: 5 - 7 working days (shorter term possible on request)

Max. cylinder dimensions:

- max. length 3200 mm
- max. diameter 380 mm
- max. weight 500 kg

